



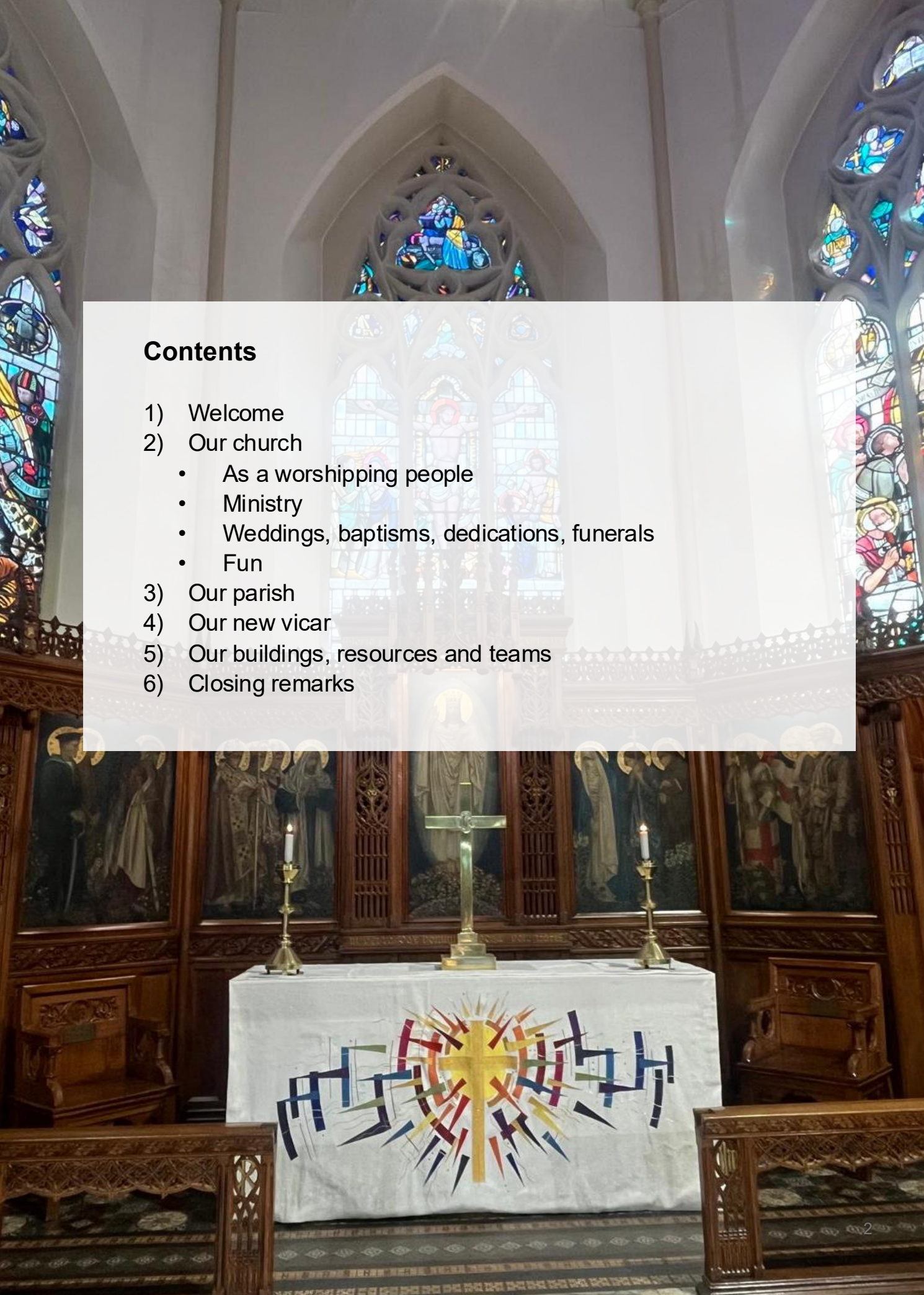
Holy Trinity & St Matthias Church, Tulse Hill

Parish Profile



Contents

- 1) Welcome
- 2) Our church
 - As a worshipping people
 - Ministry
 - Weddings, baptisms, dedications, funerals
 - Fun
- 3) Our parish
- 4) Our new vicar
- 5) Our buildings, resources and teams
- 6) Closing remarks



1) Welcome to our Holy Trinity and St Matthias Church, Tulse Hill Parish Profile

We are a warm, vibrant, inclusive evangelical church in South London whose aim is to be channels of God's transforming love.

Our church is a diverse and ethnically mixed urban worshipping community of about 200 people, with a normal Sunday attendance of 80+ and 40-50 online (livestream & catchup). We have 130 members on our electoral roll from within the parish and surrounding areas and a blend of cultures, with a strong African & Caribbean heritage. We see ourselves as a safe refuge, particularly for people who would otherwise not be involved in church, that is accepting, welcoming and fun.



Our children and young people are actively engaged in church life and services. We have flourishing creche & youth ministries, and high involvement from our young people in everything from leading worship to giving communion bread. We also have a growing 20s & 30s community.

We run a much-needed debt management and advice service through our Community Money Advice Centre. In the past year we have supported 53 new debt clients and 58 non-debt clients, 7 of whom went debt-free through our arrangement of Debt Relief Orders.



But we are also in a time of transition. For the past 8 years the church has been focused on building our hand-built hall - an innovative, carbon negative project built out of wood and straw bales and involving over 600 volunteers. We have seen wonderful stories of lives changed through this work.

Our vision now the hall is complete is that this amazing resource can be part of a new season of mission that church members feel excited to part of. We want the church to be vibrant hub for local people.

We are looking for a vicar to love and lead us on the next stage of our journey, helping us grow more in love with God and lead new ministries in our parish. We think that this vicar needs to be a visionary pastor, an insightful bible teacher, a team builder and skilled at creating or enabling opportunities for people to experience God's transforming love through prayer, learning, worship and social justice.

We pray that this profile will help you discern if God is calling you to work alongside us on this exciting journey.

2) Our Church

As a worshipping people

We are a dynamic and informal church, wanting people in the community to meet with God personally. We are eager to experience God's love and Holy Spirit through worship, prayer and love for one another and our community.

Services

We meet at 10.30am for the following services:

- 1st Sunday – All age with Holy Communion, baptisms and dedications
- 2nd Sunday – Holy Communion
- 3rd Sunday – Non-Eucharistic service
- 4th Sunday (5 week month) – Holy Communion
- Last Sunday – Youth assisted Holy Communion



Services are livestreamed and available for catch-up on YouTube.

Teaching is evangelical, insightful and bible centred: carefully exploring the scriptures in their context to bring wisdom relevant to the lives of the community today. Clergy are rarely robed.

Worship

We love music at our church. Worship is led by our church band with a lively mix of contemporary worship music and classic traditional hymns. We have a professional sound system, plus refurbished organ. Members of the group take turns in choosing the music and leading the group.

Prayer

We seek to experience God's love, power, healing and direction through prayer. Our prayers span the needs of the community, as well as social justice and world events.

We have a dedicated prayer team that meets for the Prayer Powerhouse every Sunday before the service and provides prayer ministry during the service. We have a daily prayer WhatsApp group. The church meets online to pray at our monthly Wednesday night prayer meeting.

"I came from a damaging and hurtful church situation and found Holy Trinity to be a lifeboat and a place to rebuild my faith and be nurtured as well as contributing musically."

Holy Communion

Holy Communion is celebrated every week apart from the third Sunday and is offered to everyone who wishes to take it. Children are welcome to take communion bread from weaning age and children and young people help to give communion.

Ministry

Children and young people

Children and young people are at the heart of our church family. We can have around 30 children (0-10 years) and 17 young people (11-18 years) on a Sunday but attendance varies a lot. We have a monthly all-age service, and our young people assisting with the last service of the month, including joining the worship band, tech, readings, prayers and giving the bread at communion.

We have three children's ministries run by volunteers:

- Trinity Treasures – 0-5 years – A time of worship songs, prayer, crafts and play for little ones
- Trinity Kids – 5-11 years – Activities to teach children about Jesus through bible stories and games
- Youth – 11-18 years – Conversations about living as a Christian alongside fun activities



Some think that there is an opportunity to build and grow our children's and young people's ministries, perhaps with the addition of an additional paid ministry team member who could help us with outreach in the community.

20s & 30s Group

Our 20s & 30s community meet monthly for socials and excursions.

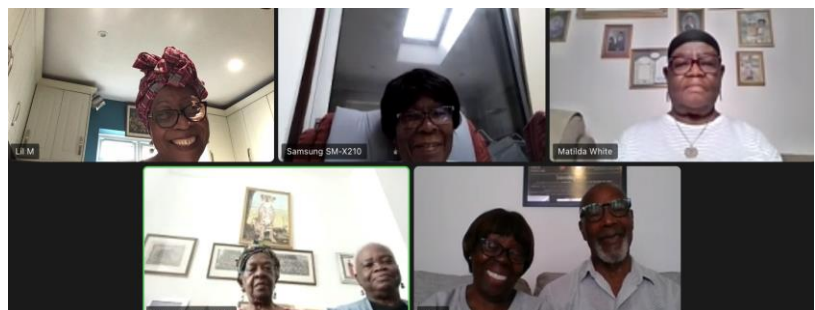
Home Groups

We have four mid-week home groups that meet regularly on zoom or in people's homes to support each other and for bible study and develop discipleship, an area we would be looking to the new vicar to encourage across the church.



Senior Citizens

Our Senior Citizens group meets weekly on zoom for bible study, fellowship and have a wonderful collective prayer time.



Weddings, baptism and funerals

In the past year we have had 9 baptisms and 9 confirmations.

The church has held three Church of England funerals and hosted several others for those of other denominations.

In the past year we have had one wedding and one service of prayer and dedication after a civil wedding.



We are an inclusive church, actively welcoming people regardless of their background, identity, or circumstances. The Church Council supports the right of clergy to use the Prayers of Love and Faith according to their conscience, whilst, as with many churches, acknowledging that there is a diversity of views, feelings and experiences relating to Equal Marriage among the congregation.



We support our clergy in considering marriage after divorce on a case-by-case basis with the approval of the bishop.

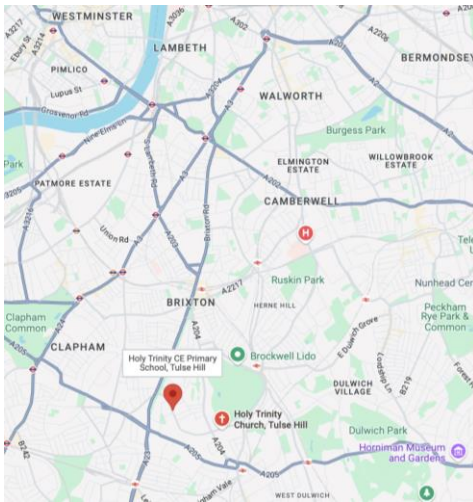
We have a beautifully restored church building, now with adjoining church hall, which we may want to promote more as a great resource and wedding venue.



Fun

We run monthly Board Games afternoons, monthly men's group, regular craft events, ceilidhs and church lunches with plenty of curry goat.

3) Our parish

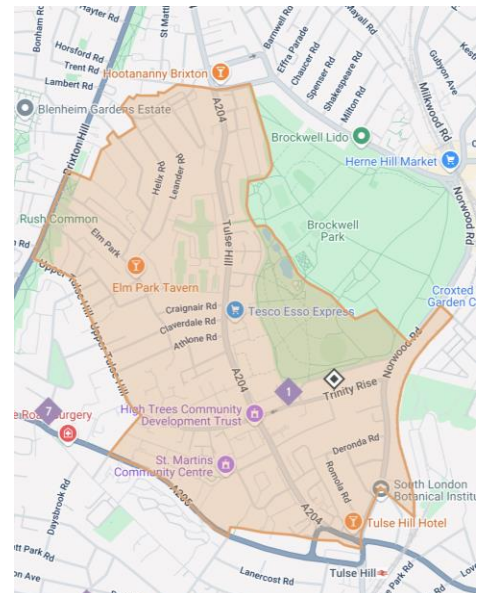


Tulse Hill is a great place to live and minister, full of character, diversity, and opportunity. It is surrounded by the cultural energy of Brixton's markets, music and food scene, the village charm of Herne Hill with its independent shops, cafes and Sunday market, and the open beauty of Brockwell Park—perfect for families, sport, and community gatherings.

With excellent transport links via Tulse Hill, Brixton and Herne Hill stations, a network of cycle routes and numerous bus routes, the area offers easy access to central London while retaining a strong local identity.

The parishes of St Matthias and Holy Trinity were merged in 1985. Our parish serves a population of around 16,421. It ranks 1,688 out of 12,178, where 1 is the most deprived parish. It has a rich ethnic and social mix.

Victorian villas and large housing estates sit side by side and there are stark differences in income; the parish is both in the top 14% most deprived in the country but also has average rents and house prices almost twice the national average. Lambeth remains one of the most dangerous places in London to be young and over the last five years knife crime has increased by 22.1%.



Tulse Hill combines the best of urban and suburban London: rapid rail and bus links, vibrant cultural scenes in nearby Brixton and West Norwood, excellent schools, and beautiful green spaces. But it is also a place of great opportunity and need of God's love and social justice.

Community and mission

Community Money Advice Centre

One of our church's major ministries is our community Money Advice Centre, which runs two days a week with a paid manager (funded by the congregation) and several volunteers. The centre team gives free and confidential advice and debt management services and is regulated by the FCA (Financial Conduct Authority). In the last year, it supported 53 new debt clients and 58 non-debt clients, 7 of whom went debt-free through our arrangement of Debt Relief Orders.

"I finally feel that I am in control and can sleep properly at night"

"It is the first time ever I felt somebody actually sat down and listened to me."

"If we had gone to another organisation I would not have received the help and support that you have given to me."

Eco-church

Our church is committed to safeguarding creation. We used alternative construction methods to build our eco-award-winning hand-built church hall, including scrap tyres, straw walls, lime and clay render with a timber frame, as well as solar panels. We have been awarded the Bronze Eco-church medal and are well on the way to Silver. This year we have also raised £22,000 to fund new solar batteries to further reduce our carbon emissions. Over the next year we are prioritising focus on teaching, community and lifestyle engagement to bring these areas up to the level of environmental care we are already practicing in our buildings, energy and worship.



Mission organisations

The PCC tithes 10% of our unrestricted income to support a mix of mission organisations at home and overseas: Eagles Malawi, Paz Y Esperanza, Prison Fellowship, Welcare and Children Worldwide.

Vicar's discretionary fund

The vicar has a fund to allocate to people in our community in need.

GoodGym

We have been working with GoodGym Lambeth for just over two years. They are a charity that facilitates groups of volunteers who run, walk, and cycle to local community organisations and isolated older people to then carry out practical tasks to support them. They have helped us on the build, in the church and in our garden to carry out various physical tasks. Through this we have made good links with their members and taken part in other activities that they run.

Schools

We are fortunate to have several schools within our parish; however, due to a decline in pupil numbers within the borough of Lambeth, some schools are at risk of closure.

Holy Trinity Church of England Primary School, located at Upper Tulse Hill, SW2 2RL, is our church school, which is currently transitioning to a one-form entry. We have a long-standing and close relationship with the school. Our vicar is expected to lead weekly assemblies, Eucharists, and other services held at the church during the school year, and to play a supportive role within the school community. We have four PCC foundation governors, who are actively involved in school life.

Fenstanton Primary School, situated at Abbots Park, London SW2 3PW, is a two-form Lambeth maintained school.

The governing bodies of Holy Trinity and Fenstanton Schools, alongside the Southwark Diocesan Board of Education, are actively working to find a solution to maintain a viable school offering within our parish.

Jubilee Primary School, located at Tulse Hill, London SW2 2JE, is a two-form Lambeth maintained school with a specialist deaf centre.



Over the years, we have continued to foster relationships between the church, Fenstanton and Jubilee schools through class visits and participation in our Easter and Christmas experiences.

Oasis St Martins Village, situated on Tulse Hill, London SW2 3UP, is our closest neighbor. Established after the closure of St Martin in the Fields Girls' School, it brings together a whole village of opportunities to serve young people and their families. We continue to work at fostering our relations to benefit both the church and the village.

City Heights E-ACT Academy, situated at Abbots Park, London SW2 3PW, is a secondary school serving years 7-11.

Elm Court School, located at Elm Park, London SW2 2EF, is a special school for pupils aged 11 to 19 years who have learning difficulties with associated social and communication needs. We preside over their annual Remembrance Day service.

Elmgreen Coeducational Secondary School, located at Elmcourt Rd, West Norwood, London SE27 9BZ, is a secondary school just outside our parish with which we have recently established links. Several classes have also visited the church to learn about Christianity.

4) Our new vicar

We are looking for an experienced vicar with relevant leadership experience who is:

- visionary - will convene, encourage and inspire us to be channels of God's transforming love in new missions in the next season of our church's story
- a team builder – comfortable at leading a paid and voluntary parish ministry team, enabling and encouraging wider participation in volunteering in our church community, as we look to build back our volunteer base
- a pastor – caring for and welcoming everyone to be part of and contribute to our community. Drawing us together and closer to God, regardless of race, wealth, gender, sexuality, class and abilities
- an insightful bible teacher - carefully exploring the scriptures in their context to bring wisdom to the lives of the congregation today
- an evangelist - skilled at creating opportunities for people to experience God's transforming love through times of prayer, worship and social justice



We are an inclusive evangelical church and welcome both men and women to lead our community.

5) Our opportunities and challenges

How our parish is changing

The demographics of our parish are radically shifting. The cost of housing in the area has created a dramatic and continuing fall in the child and family population and our own church school was very recently at risk of closure.

We have been extremely lucky over the past 50 years that our parish has been a destination of Christian immigration and stable family raising.



But now many of the adult children of those in our community cannot afford to live in the parish. There is still, however, a huge number of local children and young people who are incredibly vulnerable. We need to consider both how we attract the new people moving into the area whilst also supporting the vulnerable in our community with new ministries.

Where we think God is calling us

We are in a time of transition; our focus for the past 8 years has been the creation of our hand-built church hall. This project has brought together over 600 volunteers, with church members working alongside volunteers from the wider community and those doing community payback to create a beautiful, carbon negative accessible community space.

The prioritisation of this project has also come at the cost of some of our other ministries. Our social club, for example, sadly had to move to a different church. And while our youth and younger children's ministries are thriving, numbers of children in Trinity Kids have dwindled. Additionally, as with many other churches, our attendance and volunteer base has also not returned to pre-COVID numbers.

The hall opened in April 2024 and hosts parties and community events as well as ministries such as our children's work and the Community Money Advice Centre but we recognise with more resourcing it could offer us so much more - we long for this space to be a community hub - a place for connection and renewal, perhaps running clubs/drop-in sessions for the church and wider community.



We would love our new vicar to work with us to develop the vision, team and expand again our volunteer base. This will help us to overcome our challenges and grow the church and our ministries, and foster relations with Oasis and the wider community.

Mission

We have a recently refreshed our Mission Action Plan and have a dedicated team working on three focus areas:

Prayer: Growing our focus on Prayer

- Creating opportunities to experience God through prayer ministry

Outward: Our mission encounter Jesus

- Growing the work of our Community Advice Centre to support those who are in debt and financially marginalised
- Considering how we can work with vulnerable kids, youth and their families in our Parish through our youth and kids' ministry, expanding our partnership with the Oasis St Martins Village next door
- Identifying ways we can use the new church building to further our mission to encounter Jesus

Inward: Building and deepening connections within our church community

- Releasing new skills and people to be involved in church ministry
- signposting new people to internal ministries
- Running socials and church lunches to help people get to know each other

6) Our buildings, resources and team

The church

The church, a Grade II listed building constructed in 1856, underwent extensive refurbishment in the early '90s and remains in very good repair. In 2022, two new gas boilers were fitted, ensuring efficient heating. The roof is in good order, with annual cleaning of gutters. Our sound and AV systems have all been upgraded in recent years.

The church can seat up to 350 in the nave and 150 in the balcony.



Its striking feature is the absence of any supporting internal pillars, a design choice stipulated by Jonah Cressingham, who generously donated land and money for its construction. As a boy, Jonah often had to sit behind a pillar at church, which influenced his request for a pillar-free design. The church houses a very well-regarded organ built by Norman & Beard in 1898, boasting a 9,000-piece structure with 2,140 pipes. In addition to the main nave, the church includes a small kitchen, vestry, and office/storage space in the tower, and toilets.

The undercroft features three rooms where our Youth and pre-school Trinity Treasures group meet most Sunday mornings. Every area of our building, (apart from the tower room) is wheelchair accessible.

Our new hall

In 2024, our award-winning carbon-negative Eco hand-built Hall was completed. This project was a significant undertaking by the church over a seven-year construction process. The ground floor features a spacious hall that comfortably accommodates 120 people around tables, a large kitchen, and a separate control/office room.

Upstairs, there are three large rooms. The hall is surrounded by landscaped gardens, including our Memorial Garden at the front, and "Ivy's Garden" at the back. This offers ample space to relax and enjoy the bounty of our expanding orchard. The Hall is heated and cooled by a heat pump, and the south side of the roof boasts a large 19.5kW solar array.

The hall was funded through gifts and grants. It has no outstanding loans.



The vicarage

The Vicarage, built post-war, features a spacious layout with a kitchen, dining room, large reception room, study, guest bedroom, and shower room on the ground floor. Upstairs, there are four bedrooms and a bathroom. The property boasts generous gardens at both the front and rear. We are currently exploring potential improvements to make the building net-zero.



Finance

We strive to live within our means, with a balanced budget each year along with a committed level of contingency funds.

Parish Support Fund – we aim to increase our contribution by at least inflation each year, and meet our committed amount each year.

HOLY TRINITY & ST MATTHIAS, TULSE HILL

Statement for the year ended 31 December 2024

| | Unrestricted Funds | Designated Funds | Restricted Funds | Endowment Funds | 2024 TOTAL FUNDS | 2023 TOTAL FUNDS |
|------------------------------------|--------------------|------------------|------------------|-----------------|------------------|------------------|
| Income from: | | | | | | |
| Voluntary Income | 114,593 | - | 70,147 | - | 184,740 | 231,464 |
| Charitable Activities | 2,858 | - | 120 | - | 2,978 | 31,000 |
| Income from Property | 12,345 | 13,490 | 1,273 | - | 27,108 | - |
| Investments | 4,080 | - | 152 | - | 4,232 | 11,394 |
| Other income | 239 | - | 3,968 | - | 4,207 | 1,887 |
| Total Income | 134,114 | 13,490 | 75,660 | - | 223,264 | 275,745 |
| Expenditure on: | | | | | | |
| Charitable activities | 113,286 | 12,166 | 245,668 | - | 371,121 | 335,232 |
| Other | 715 | - | - | - | 715 | 930 |
| Total Expenditure | 114,001 | 12,166 | 245,668 | - | 371,836 | 336,162 |
| Net gains/(losses) on investments | - | - | 304 | - | 304 | 800 |
| Net Income/(Expenditure) | 20,113 | 1,324 | (169,704) | - | (148,267) | (59,617) |
| Transfers between funds | (17,489) | - | 20,538 | (3,049) | - | - |
| Net movement in funds | 2,624 | 1,324 | (149,166) | (3,049) | (148,267) | (59,617) |
| Total funds brought forward | 85,440 | 10,325 | 216,628 | 3,049 | 315,441 | 375,058 |
| Total funds carried forward | 88,064 | 11,649 | 67,462 | - | 167,176 | 315,441 |

Our team

Clergy

- Honorary Curate: Rev. William Sharpe
Non-Stipendiary Minister who works as a deputy team leader and senior Chaplain at
Guys & St Thomas' NHS Foundation Trust

Lay Ministers

- Lay Reader: Gloria Otu-Simon
- Commissioned Pastoral Lay Minister: Angela Jowsey

Church Officers

- Church Wardens: Fay Morris & Nicole Lyon
- Deanery Synod Rep & Electoral Roll: Jamie Lobban
- PCC Secretary: David Jowsey

Paid Support

- Yetunde Akintunde (Community Money), Aaron (Bookkeeper), Mary (Cleaner)

7) Closing remarks

Thank you for reading our parish profile. We pray that this profile will help you discern if God is calling you to work alongside us on this exciting journey.

If you are that person, we look forward to journeying with you to meet the challenges and enable possibilities God has for Holy Trinity during your time with us.



